

LEGEND

- A - IRON PIN FOUND FROM VOL. 10, PG. 196 SURVEY
- B - IRON PIN & CAP SET THIS SURVEY
- C - MAG NAIL & RIBBON SET IN DRIVEWAY

8' 8" wide  
54' wide lot  
30°

SURVEY OF LOT 3A IN HENRY YEAGER'S 1st ADDITION TO THE CITY OF NAPOLEON, HENRY COUNTY, OHIO

PLAT OF SURVEY FOR  
PRESBYTERIAN CHURCH

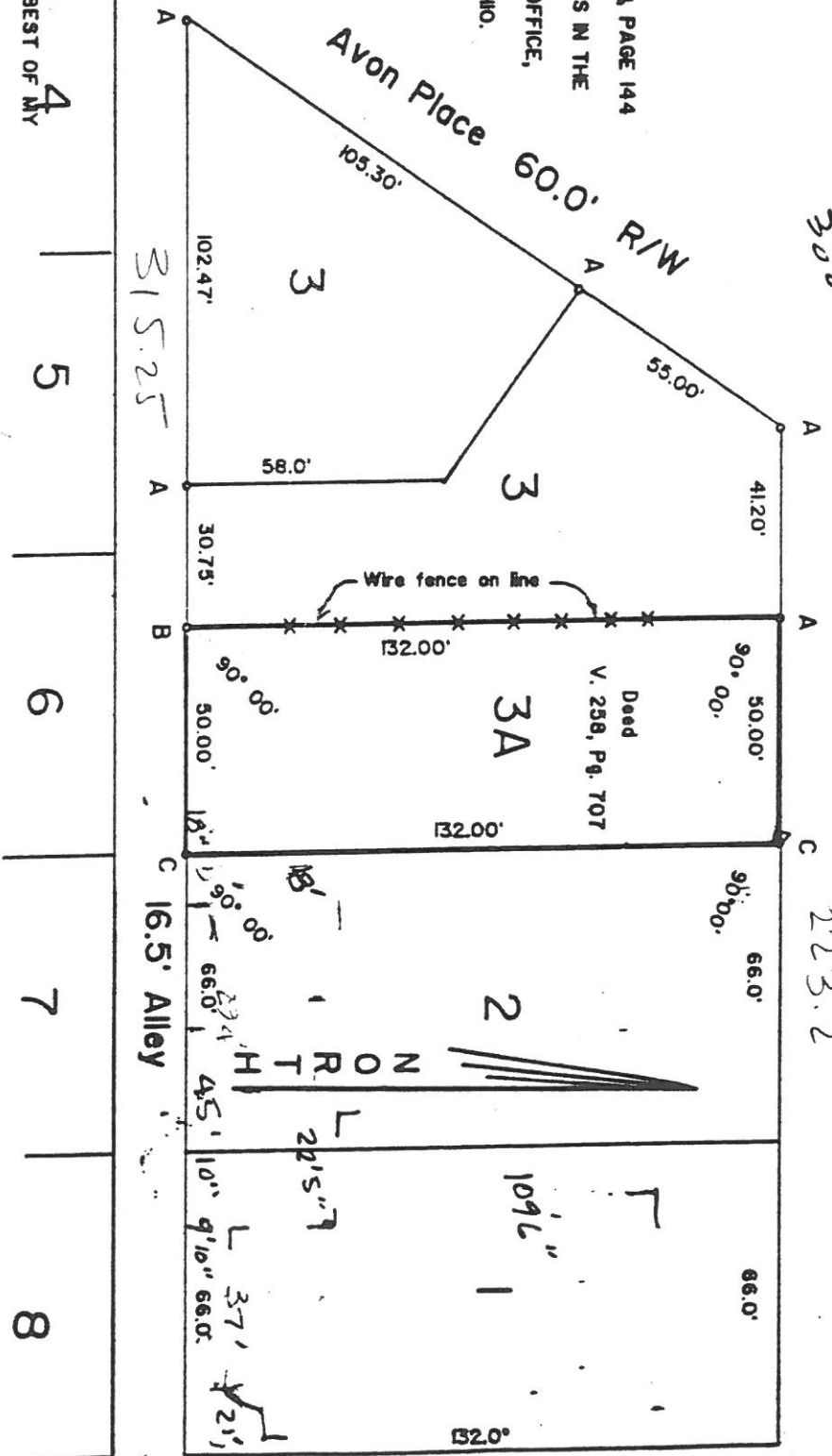
Washington Street 82.5' R/W

DWG. No. D-97405-5  
DATE: JAN. 28, 1997  
SCALE: 1" = 40'

SURVEY FILED IN VOLUME 24 PAGE 144 OF THE RECORD OF SURVEYS IN THE HENRY COUNTY ENGINEERS OFFICE, COURTHOUSE, NAPOLEON, OHIO.

I HEREBY STATE TO THE BEST OF MY KNOWLEDGE AND BELIEF THAT THIS SURVEY IS CORRECT AND TRUE.

*Wayne Aschemeier*  
WAYNE ASCHEMEIER R. L. S. 5922  
REGISTERED LAND SURVEYOR



Webster Street 82.5' R/W

303 W. Washington

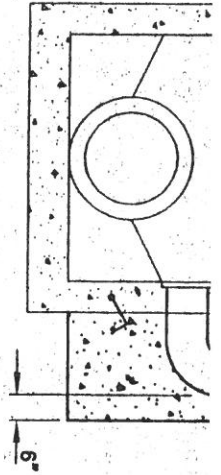
WAYNE ASCHEMEIER SURVEYING

P. O. Box 91  
RDGEVILLE CORNERS, OHIO 43085  
(419) 267-8215

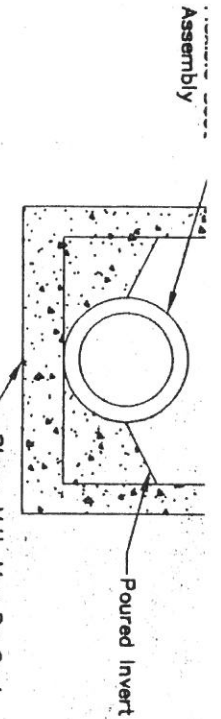
243

34

*Row*

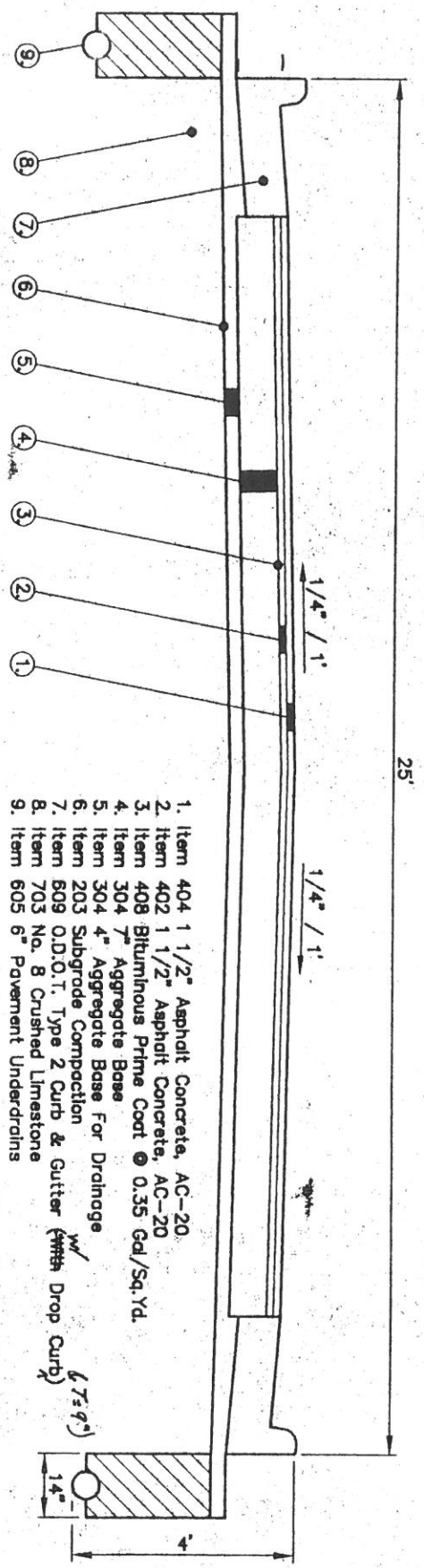


External Sanitary Drop Connection



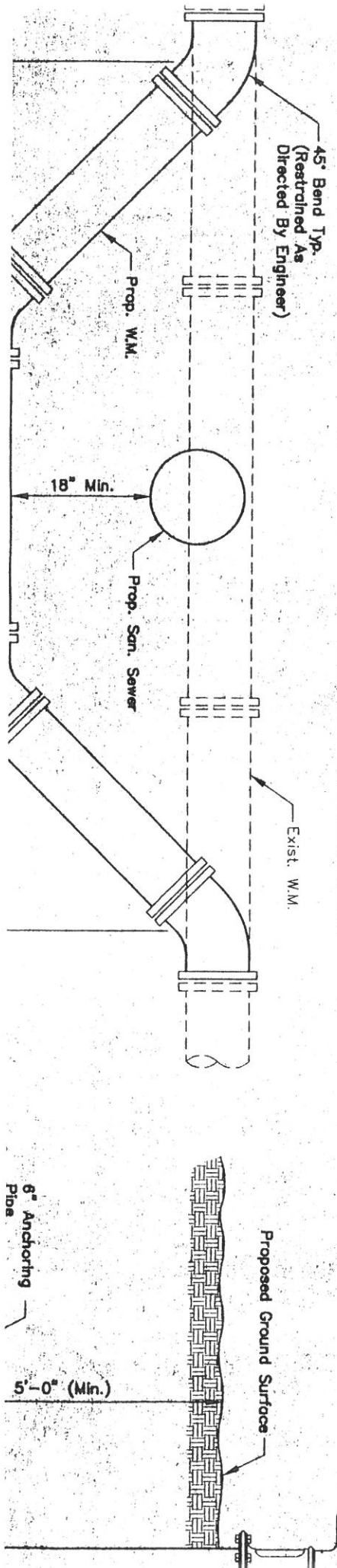
Standard Manhole Detail

Example:



1. Item 404 1 1/2" Asphalt Concrete, AC-20
2. Item 402 1 1/2" Asphalt Concrete, AC-20
3. Item 408 Bituminous Prime Coat @ 0.35 Gal/Sq. Yd.
4. Item 304 7" Aggregate Base
5. Item 304 4" Aggregate Base For Drainage
6. Item 203 Subgrade Compaction
7. Item 609 O.D.O.T. Type 2 Curb & Gutter (with Drop Curb)
8. Item 703 No. 8 Crushed Limestone
9. Item 605 6" Pavement Underdrains

Typical Pavement Section



Typical Pavement Section

45° Bend Typ.  
(Restrained As Directed By Engineer)

Prop. W.M.

18" Min.

Prop. San. Sewer

Exist. W.M.

Proposed Ground Surface

6" Anchoring Pipe

5'-0" (Min.)



